

ProWorks

Network and Fire Management Graphics Systems

General

ProWorks is the next generation in life safety and building systems integration for monitoring fire, security, card access, and other facility information over a proprietary network. ProWorks is designed to allow a combination of different technologies and network products to be operated on the same workstation. It features intelligent gateways to facilitate modular system integration, allowing continued expansion of workstation and network functions. These gateways add more flexibility when integrating building operations and communicating over a local Ethernet or wide area TCP/IP network. The ProWorks workstation is a high-performance industrial computer with text and color graphic display capability of all network events and points. The workstation uses Microsoft Windows® 7 (64-bit), providing an easy-to-use graphical user interface. The operator is presented with a consistent look and operation for all monitored equipment. The ProWorks PC workstation has the ability to monitor multiple local device net-works, remote sites, and is an ideal addition to the PTW•FIRE•NET network when network monitoring and control are required.



Features Overview

- Rack-mountable 2.16 GHz processor with 3.2 GB of RAM, two 500 GB hard drives (one master and one redundant drive), sound card, and speakers. Monitor options available: 19" or 22".
- Operates on Microsoft Windows® 7 (64-bit).
- Supports up to 200 intelligent gateways.
- PTW•FIRE•NET gateway redundancy for network survivability.
- Support for multiple language options.
- Compatible with standard, high-speed PTW•FIRE•NET, and Ethernet based networks.
- Control of security and fire panels (extent of control determined by panel model).
- Operator log with response tracking.
- Alphanumeric paging and e-mail notification with configurable message format.
- History Manager records operator, event, and response (with time and date stamp) to disk.
- Up to 6 states can be visually represented for each input device: Normal, Trouble, Fire Alarm, Pre-Alarm (detectors), Disabled and Security.
- Intuitive paging feature supports voice paging for mass notification PTW-NOTIFY-IP.

USER INTERFACE

- All off-normal events displayed simultaneously with text and corresponding graphic screens.
- Automatic screen navigation (selectable for each device) that locates and zooms to the device related to an alarm or event, based on the priority of the event.
- Dynamically generated floor plan overview.
- Floor plans can be zoomed in and out and devices can be placed at different zoom levels.
- Full linked multimedia (text, audio, video, and bitmaps) to any device, all definable by the administrator.
- Intuitive navigational tree and icons for easy access to building floor plans.

USER INTERFACE

- Real-time event printing of system-wide events.

SYSTEM SETUP

- Graphic Editing mode allows on-site programming of floor plan screens, device icons, functional and navigational buttons.
- Import converted vector drawing files (.WMF), and bitmap files from existing CAD floor plan drawings (.BMP, .JPG, and .GIF).
- Graphics printing for floor plans and reports.
- Customizable device icon and colors to visually represent each event type.
- User defined icons can be added to the workstation (.PNG, .BMP, .WMF, .JPG, and .GIF formats).

ProWorks

Network and Fire Management Graphics Systems

SECURE ACCESS

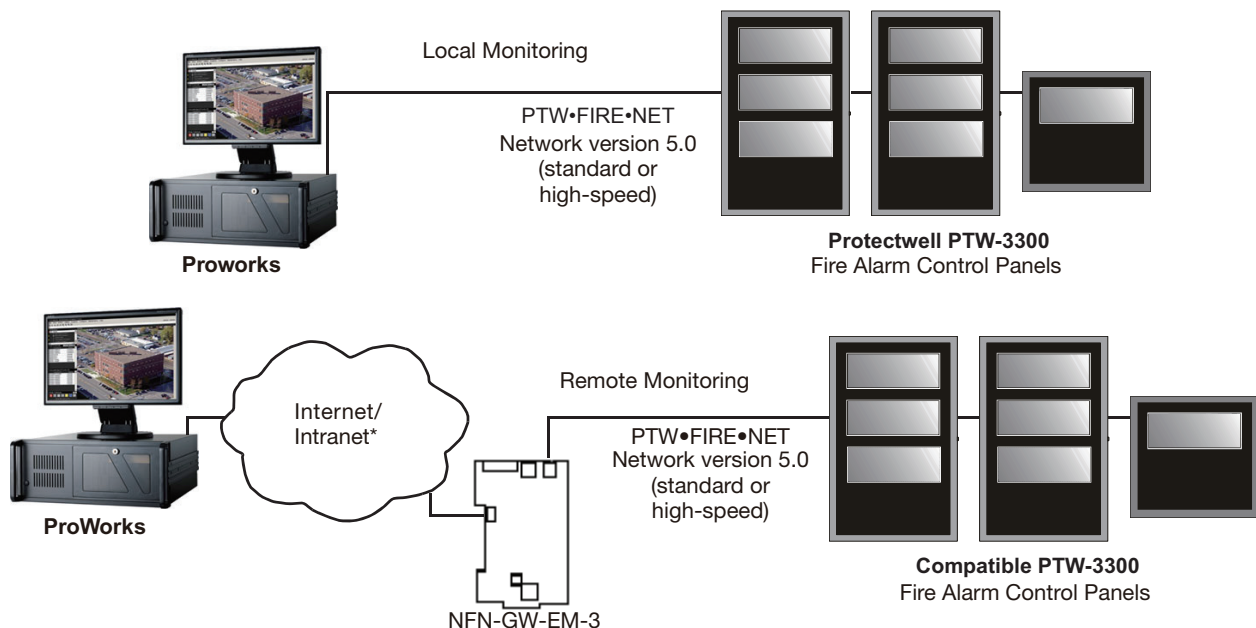
- System Administrator-definable security, monitoring, and control profiles allow for extremely flexible definition of operator accounts.
- Operator Login/Logout/Change Password feature allows only authorized personnel to access the system.
- Logs in history of any operator changes in the workstation.

SYSTEM MAINTENANCE

- Backup capability for screen, member, and history databases. All software is backed up on CD-RW.
- Obtain software version numbers for network panels (Protectwell Series fire panels.)
- Upload/Download databases to Protectwell panels and perform panel upgrades (**PTW-3300** Series only) over the network.
- Individual Enable/Disable or Group Enable/Disable points and zones on the **PTW•FIRE•NET** network.

PTW•FIRE•NET Monitoring

An ProWorks system is an ideal component of a Fire Command Center for real-time fire system status and system control options. **ProWorks** interfaces directly to a **PTW•FIRE•NET** fire system using an **NFN** Gateway. The **NFN** Gateway is an intelligent interface used by an ProWorks system that facilitates monitoring and control of a **PTW•FIRE•NET** (version 5.0) network and Protectwell fire panels. The **NFN** Gateway is available in two versions: PC-based gateway and embedded gateway. The embedded **NFN** Gateway enables users to monitor multiple sites (local or remote) over an IP network. Minimum ProWorks equipment options/requirements are available on the **NFN** Gateway data sheet.



* A UL Listed ethernet (TCP/IP) switch is required between a shared-IP network and the ProWorks equipment. Contemporary Control Systems, Inc. (www.ctrlink.com) has several UL864 recognized switching hubs.

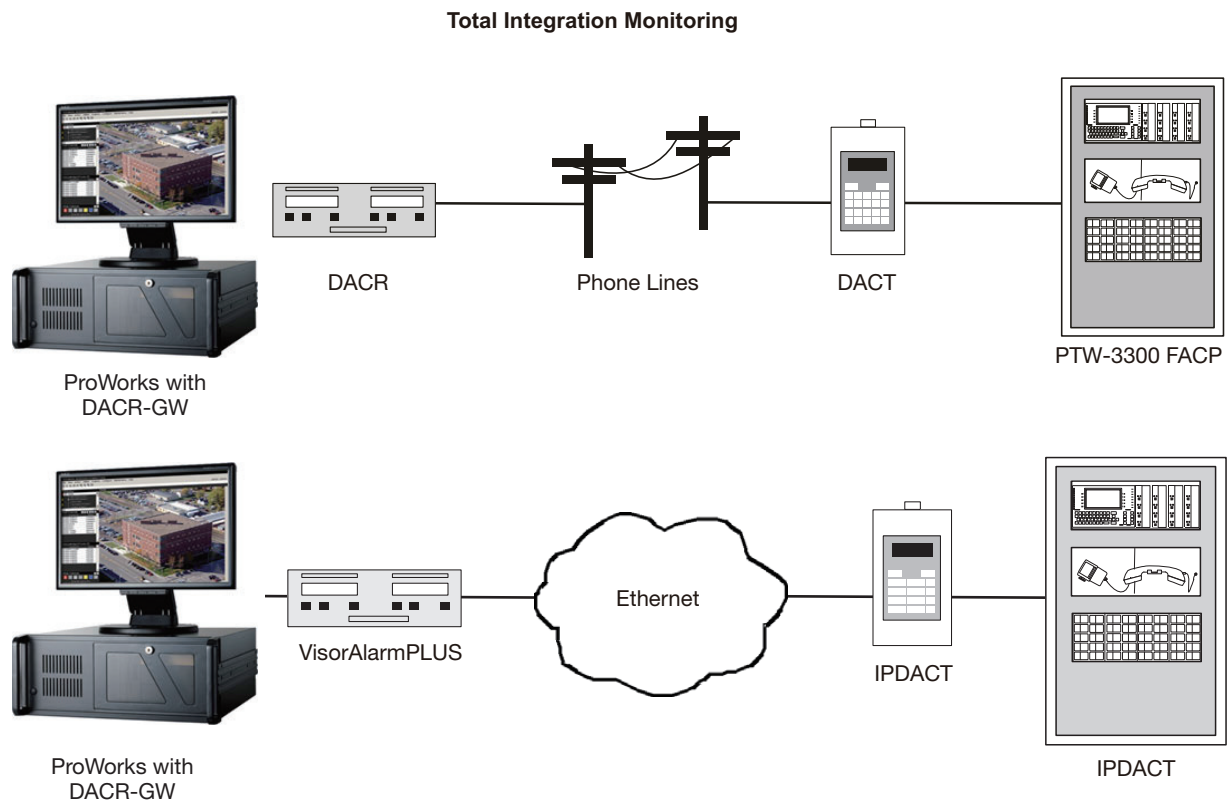
ProWorks

Network and Fire Management Graphics Systems

Building Systems Integration

In addition to Protectwell fire-only applications, the **ProWorks** Proprietary Supervising Station mode allows integration of competitive fire panels, security, and access control into one graphical user interface. This mode allows for monitoring of local or remote (over shared IP or standard phone lines) building systems using Digital Alarm Communicator Receiver (DACR-GW).

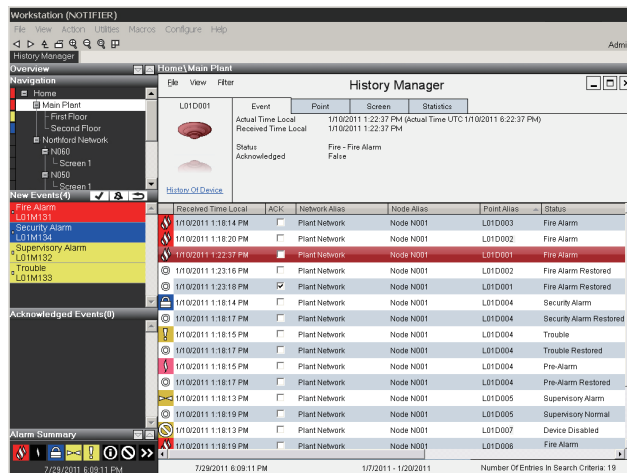
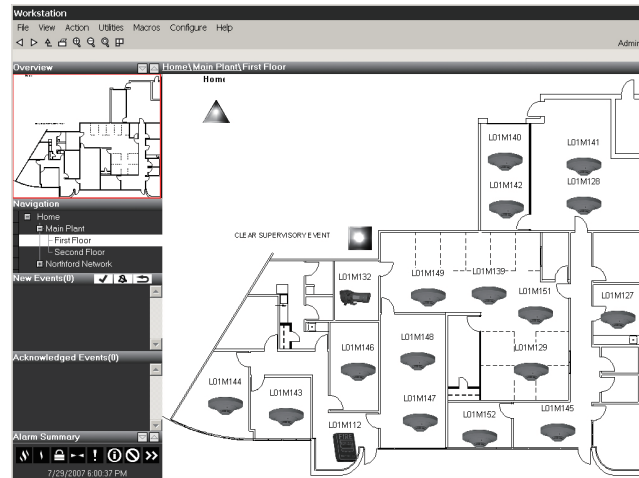
The flexible **ProWorks** system can interface to and monitor events received by Ademco (685), Radionics (D6600), Silent Knight (9500, 9800), and Teldat VisorAlarm Central Station receivers (contact ID format only) by using the Receivers Gateway.



ProWorks

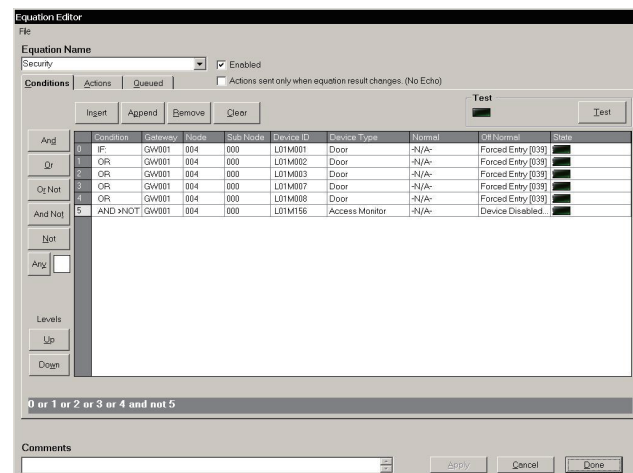
Network and Fire Management Graphics Systems

ProWorks
Workstation
Software



History
Manager

Net-Logic



ProWorks

Network and Fire Management Graphics Systems

Specifications

DIMENSIONS

CPU Dimensions (desktop/rack mount unit): Width: 482 mm (19.0"). Depth: 450 mm (17.7"). Height: 177 mm (7.0"). Weight: 17.5 kg (39 lbs.).

CPU Electrical: AC Input: (frequency 47 Hz – 63 Hz), 9.0 A @115 V (95-132 V), 4.0 A @ 230 V (185-264 V).

22" Monitor Dimensions*: Width: 20.2" (513.08 cm). Height: 15.9" (403.86 mm). Depth: 8.7" (221.8 mm). Weight: 15.3 lbs (6.9 kg).

19" Monitor Dimensions*: Width: 17.3" (43.94 cm). Height: Adjustable from 13.25" (33.65 mm) to 15.25" (38.73 mm). Depth: 8.3" (210.8 mm). Weight: 10.1 lbs (4.58 kg).

***DIMENSIONS NOTE:** Dimensions subject to change. Contact Protectwell for further information.

Monitor electrical: (frequency 50/60 Hz auto-adjust), 0.65A–0.3A @ 100–240 VAC. Power consumption: 42 watts (maximum).

ENVIRONMENTAL

Operating Temperature: 0°C to 49°C (32°F to 120°F).

Specialized Client Applications

ProWorks Workstation Components: ProWorks Workstation Graphics User Interface (GUI) software and hardware package. Includes UL-Listed software key. One UL-listed monitor required per workstation; dualmonitor capable (monitors sold separately).

NFN-GW-PC-F: NFN Gateway PC card with fiber*.

NFN-GW-PC-W: NFN Gateway PC card with wire*.

NFN-GW-EM-3: NFN Gateway, embedded.

NFN-GW-PC-HNSF: High-speed NFN Gateway PC card for single-mode fiber

NFN-GW-PC-HNMF: High-speed NFN Gateway PC card for multi-mode fiber

NFN-GW-PC-HNW: High-speed NFN Gateway PC card for wire.

DACR-GW**: Receivers Gateway (PC version)*.

PTW-NOTIFY-IP: Mass notification voice paging; can page up to 50 NFN gateways simultaneously.

ProWorks-NOTIFY: Adds e-mail option to ProWorks. E-mail notification requires an SMTP server or a web hosting service with SMTP service provided.

ProWorks-PAGER: Alphanumeric pager interface option (requires an alphanumeric paging service).

LED SIGN-GW: Emergency sign integration. Can operate with or without ProWorks Workstation.

OAX2-24V: Two-line sign for use with LED SIGN-GW. TCP/IP, 24V or POE (Power over Ethernet).

CAP-GW: For use with or without ProWorks Workstation.

*NOTE: If adding to an existing system, please provide customer service with the 5-digit software key number of your workstation. An upgrade authorization will be provided to you.

**ORDERING NOTE: Authorized distribution only.