

PMM-3AP

Zone Module

Description

The PMM-3AP zone module is used for an intelligent four-wire system, each module in the loop must be addressed, its address is set by handheld programmer LP300.

The zone module is used to monitor the operating state of traditional detectors (normal, open, or alarm) and feedback to the system. All detectors monitored must be compatible with this module.



Features

- The Zone Monitor returns a preset analogue value when all detectors on the zone are in quiescent state. A different value is returned when a detector changes to the alarm state.
- The Zone Monitor is powered by 24VDC power supply, and it will latch the alarm state until the detection zone is reset by fire control panel.
- The Zone Monitor is compatible with JTW-BD-885 Heat Detector and JTY-GD-882 Optical Detector.
- One red LED is visible through the front cover of the enclosure. The red LED is illuminated to indicate that a fire alarm condition has been detected on the zone wiring. The flashing LED can also be programmed when the Zone Monitor is polling.

Maximum Capacitor on Zone Terminals: 20µF.

Operating Temperature: -40°C ~ 70°C.

Operating Humidity: 0% - 95%RH (non-condensing).

Dimension: 88mm length × 34mm width × 102mm height.

Materials: White flame-retardant polycarbonate/PC+ABS.

Weight: 95g.

Standard: GB16806-2006.

Approvals: CCCF.

Specifications

Rated Voltage: 24VDC.

Loop Supply voltage: 17-28VDC.

Communication Protocol Voltage: 5V – 9V peak to peak.

24VDC Quiescent Current: 6.5mA.

24VDC Alarm Current: 55mA.

Loop Alarm Current: 3mA.

Loop Quiescent Current: 2mA.

End-of-line Resistor Value: 6.2kΩ.

Max Detection Zone Impedance: 50Ω.

Max Volume of Detectors: 20.

Stabilization Time on Power-up: 4 seconds.

Terminal

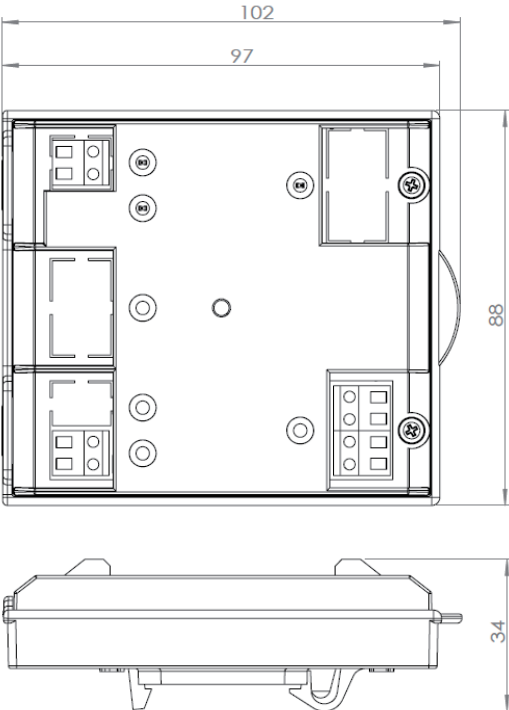
The terminal L-, L+ is for connecting the loop wire.

The terminal Z+, Z- is for connecting the zone wire.

The terminal 24+, 24- is for connecting the external 24VDC power supply.

- L- is "Loop -"
- L+ is "Loop +"
- Z+ is for connecting the "Zone +"
- Z- is for connecting the "Zone -"
- 24+ is for connecting the "Power +"
- 24- is for connecting the "Power -"

Dimensional Drawing



Status Indications

Legend	LED Status	Description
Polling/Alarm	Flashing Red/ Continuous Red	Polling LED/ Alarm LED

Mechanical Construction

The main components of the Zone Module are molded in a robust fire-retardant polycarbonate and PC/ABS.

The Zone Module is designed to be mounted on a 35mm width DIN-Rail inside an enclosure.

NOTE: This unit is not designed for outdoor use.